

附件

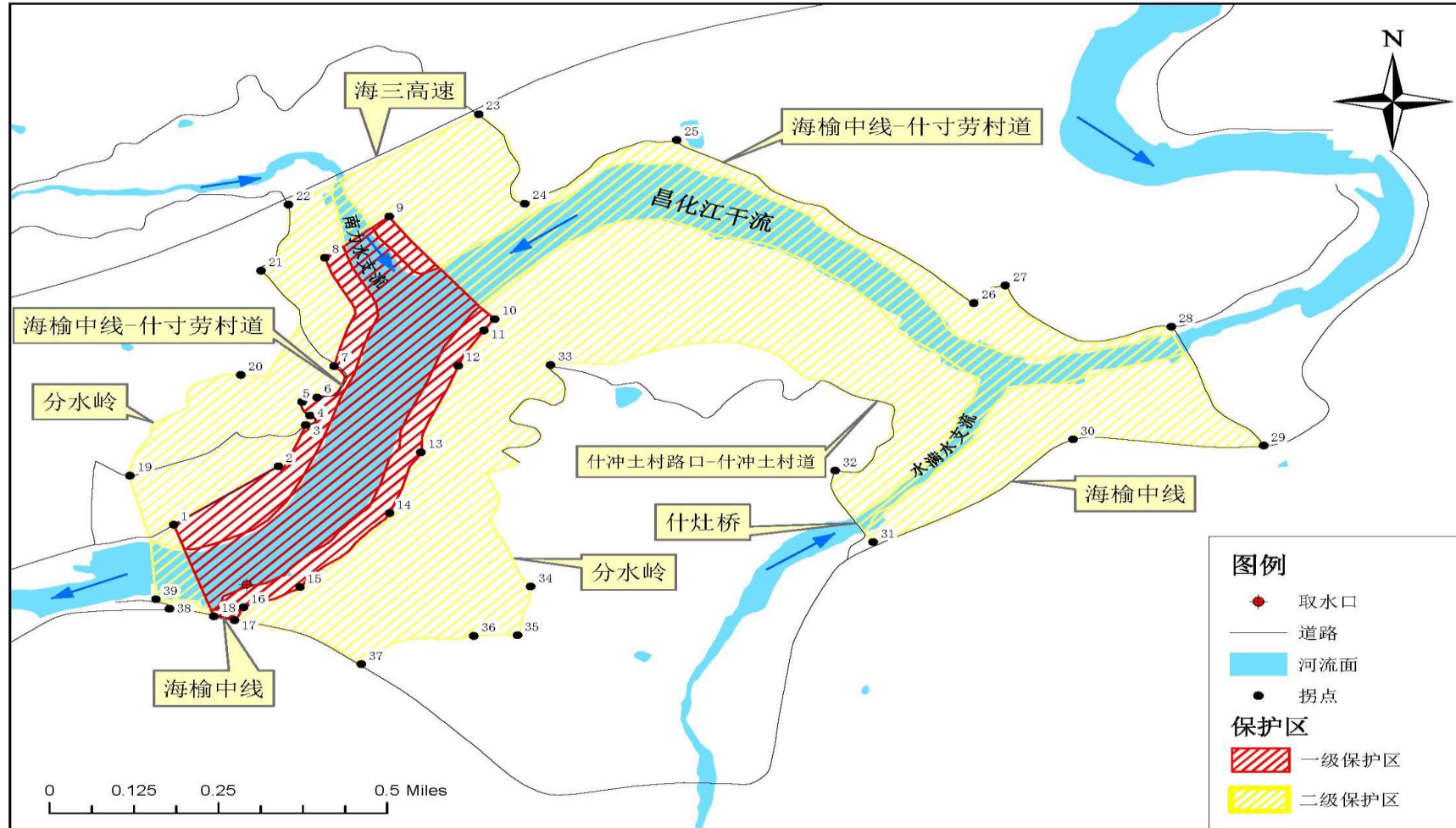
饮用水水源保护区拐点坐标表及划分示意图

五指山市昌化江毛阳镇什苗村饮用水水源保护区拐点坐标表

拐点编号	保护区级别	经度 (E)	纬度 (N)
1	一级保护区	109° 30' 50.73058''	18° 56' 36.35653''
2	一级保护区	109° 30' 58.80066''	18° 56' 41.92795''
3	一级保护区	109° 31' 0.89738''	18° 56' 45.87929''
4	一级保护区	109° 31' 1.23209''	18° 56' 46.78009''
5	一级保护区	109° 31' 0.63141''	18° 56' 48.08292''
6	一级保护区	109° 31' 1.79851''	18° 56' 48.50334''
7	一级保护区	109° 31' 3.08756''	18° 56' 51.50017''
8	一级保护区	109° 31' 2.37648''	18° 57' 1.83631''
9	一级保护区	109° 31' 7.35363''	18° 57' 5.78365''
10	一级保护区	109° 31' 15.48810''	18° 56' 55.97528''
11	一级保护区	109° 31' 14.66073''	18° 56' 54.90429''
12	一级保护区	109° 31' 12.67500''	18° 56' 51.52791''
13	一级保护区	109° 31' 9.79038''	18° 56' 43.25888''
14	一级保护区	109° 31' 7.39185''	18° 56' 37.47228''
15	一级保护区	109° 31' 0.47233''	18° 56' 30.40989''
16	一级保护区	109° 30' 56.12309''	18° 56' 28.46665''
17	一级保护区	109° 30' 55.40388''	18° 56' 27.24767''

18	一级保护区	109° 30' 53.81853"	18° 56' 27.61130"
19	二级保护区	109° 30' 47.34880"	18° 56' 41.04003"
20	二级保护区	109° 30' 55.89953"	18° 56' 50.64773"
21	二级保护区	109° 30' 57.47274"	18° 57' 0.60005"
22	二级保护区	109° 30' 59.56964"	18° 57' 6.90060"
23	二级保护区	109° 31' 14.25458"	18° 57' 15.52902"
24	二级保护区	109° 31' 17.81176"	18° 57' 6.99438"
25	二级保护区	109° 31' 29.53307"	18° 57' 13.06940"
26	二级保护区	109° 31' 52.45789"	18° 56' 57.51786"
27	二级保护区	109° 31' 54.89050"	18° 56' 59.19172"
28	二级保护区	109° 32' 7.70231"	18° 56' 55.25328"
29	二级保护区	109° 32' 14.83329"	18° 56' 43.90952"
30	二级保护区	109° 32' 0.12328"	18° 56' 44.50784"
31	二级保护区	109° 31' 44.69514"	18° 56' 34.69961"
32	二级保护区	109° 31' 41.76168"	18° 56' 41.53182"
33	二级保护区	109° 31' 19.80308"	18° 56' 51.60037"
34	二级保护区	109° 31' 18.27451"	18° 56' 30.45366"
35	二级保护区	109° 31' 17.25060"	18° 56' 25.80604"
36	二级保护区	109° 31' 13.87716"	18° 56' 25.74337"
37	二级保护区	109° 31' 5.20482"	18° 56' 23.04600"
38	二级保护区	109° 30' 50.39531"	18° 56' 28.33866"
39	二级保护区	109° 30' 49.34247"	18° 56' 29.24360"

五指山市昌化江毛阳镇什苗村饮用水水源保护区示意图



审图号：琼S(2023)226号